

Waltham Partnership for Youth (WPY)

FOUNDED: 1988

CURRENT ORGANIZATION BUDGET: \$1,200,000

CONTACT: Magali Garcia-Pletsch, *Executive Director*

📞 781.314.3367

✉️ magali@walthampartnershipforyouth.org

🌐 www.walthampartnershipforyouth.org



Waltham is a vibrant city with a wealth of economic, educational, and cultural resources, yet many young people do not have access to the same opportunities as others. These disparities limit their key life outcomes, including education, employment, health, and well-being.

Waltham Partnership for Youth (WPY) works to close this opportunity gap by running programs for youth and connecting families to resources through collaborations with community partners. WPY's goal is for all students to have the skills and resources to create their own paths to success and well-being. WPY serves over 850 young people and families annually, connecting them to education, career pathways, social-emotional support, and community resources.

Program Areas:

- Wraparound Waltham: Holistic support for newcomer immigrant students, including case management, bilingual counseling, and community resource navigation
- Career Exploration & Training: Paid internships, mentoring, career workshops, and professional development for high school students
- Research & Education: Leadership of national survey on student well-being to inform local programming and policies

Two-Year Goals

- Expand number of funded student internships by 50%
- Double the amount of research dissemination
- Pilot program to support 10 WPY alumni with post-secondary pathways
- Expand organizational capacity by 2 FTEs to support development and communication

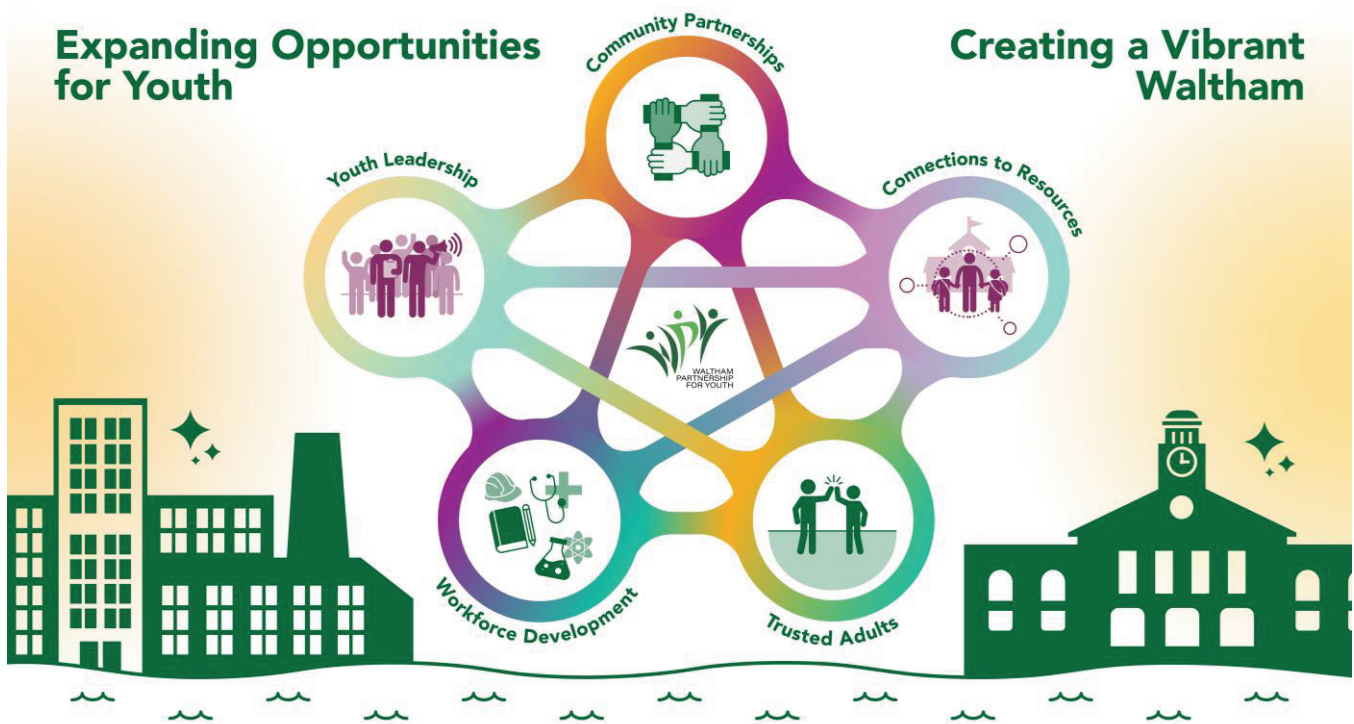
Investment Opportunity

WPY seeks \$2 million over the next two years to support its growth in three key areas. First, funding will allow WPY to provide additional services and increase collaboration with community partners to better meet the increasing needs of the immigrant community in Waltham. Second, WPY seeks to increase internship opportunities for young people and build an alumni support program. Third, WPY will expand internal organizational capacity and financial sustainability by hiring full-time staff focused on development, communications, and operations.

Ways to Invest

- \$5,000 to sponsor a student internship stipend
- \$4,000 to support in-school programming for immigrant students
- \$100,000 to staff the Welcome Center
- Facilitate connections to local partners
- Host a student internship
- Apply to join the Board of Directors

Waltham Partnership for Youth Model



Program Areas

WPY's work is grounded in the belief that when young people are connected to meaningful opportunities and supportive relationships, they can chart their own paths to success. Through strategic partnerships with schools, nonprofits, and local employers, WPY delivers programs that respond to the evolving needs of Waltham's youth and families—especially those who are newly arrived, navigating systemic barriers, or facing opportunity gaps. The following initiatives illustrate WPY's holistic, community-driven approach to youth development.

Wraparound Waltham

In collaboration with the public schools, Wraparound Waltham connects newcomer immigrant students and their families to school and community resources that address their holistic needs. All services are culturally and linguistically responsive.

During the school day, students participate in a small group, called Welcome Class, where they build relationships with peers and adults while learning about opportunities in the community.

The Welcome Center is a centralized hub where newcomer students and families can seek referrals for legal aid, housing support, mental health and medical care, and financial assistance. The Center also provides workshops on topics like immigrant rights, educational opportunities, and workforce development.

Wraparound students often need additional mental health supports due to experiences they had related to migration. Through partnerships with local organizations, WPY provides access to no-cost bilingual mental health services.



Program Areas (Continued)

Career Exploration & Training (CET)

The cornerstone of CET programming is a paid internship program, where students participate in skill-building learning opportunities hosted by Waltham employers in sectors such as healthcare, education, technology, and mental health. Students also participate in workshops on resume building, networking, and industry skills. WPY offers specialized mentorship programs for students of color, connecting them with professionals in their fields of interest. This program connects youth to career paths, helping them to be career-ready and feel empowered to find their individual path towards success.

Research & Education

WPY leads Waltham's Youth Risk Behavior Survey (YRBS), a national public health monitoring system that looks at health-related behaviors among high school students in the United States. Conducted every two years, the survey provides critical data about mental health, substance use, and social-emotional well-being that WPY uses to inform programming and community partnerships, as well as raise awareness at the city and state level.

"We cannot fully meet the social, emotional, physical, economic, and mental health needs of our immigrant youth and families without collaboration from community partners like WPY."

— Geneva Valvo, Waltham Public Schools

Leadership & Governance

Magali García-Pletsch, Executive Director, joined Waltham Partnership for Youth in 2021 as the first Director of Programs and Operations. Her career has been dedicated to building bridges and making connections across communities. She brings extensive experience in schools, higher education, and social service organizations.

WPY staff reflects the community: 90% are bilingual and nearly half are first generation immigrants.

WPY's Board of Directors includes 18 members with wide ranging areas of professional expertise. Nearly 90% of the Board work, reside in, or grew up in Waltham.

Financial Stability

Waltham Partnership for Youth currently secures funding through foundations, corporate giving, government contracts, events, and individual donations. WPY has several multi-year grants and is looking for additional long-term funding relationships. Anticipating that government funding will continue to decrease, WPY is actively seeking to build a stronger base of foundation and individual donors.

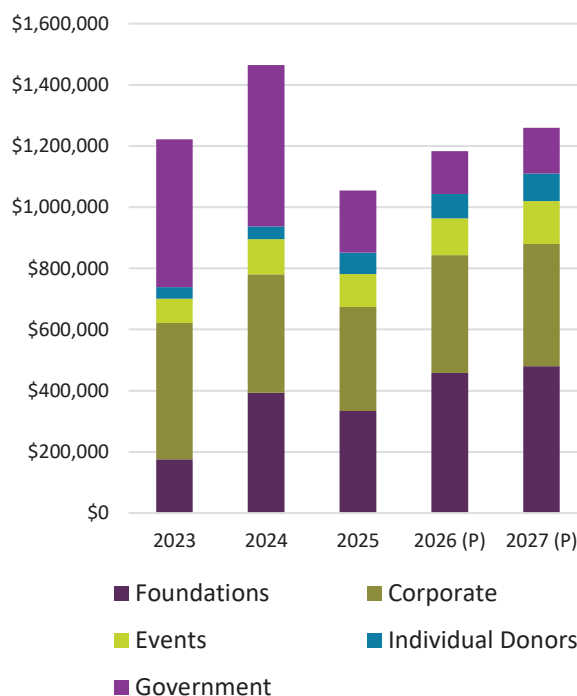
KEY INVESTORS

- Boston Children's Hospital
- The Boston Foundation
- The Clowes Fund
- Cummings Foundation
- The Ludcke Foundation
- Marriott Daughters Foundation
- Middlesex Savings Bank
- Newton-Wellesley Hospital

KEY PARTNERS

- Abcam
- Bentley University
- Brandeis University
- Children's Charter
- Doc Wayne
- MassHire Metro Southwest Workforce Board
- The Village Bank
- Waltham Public Library
- Waltham Public Schools

Revenue by Source





Success Story

DANIEL ARANA MAZARIEGOS

When Daniel first came to WPY, he had just immigrated from Guatemala. As a Spanish speaker, it was difficult for him to communicate and understand his new environment.

Wraparound Waltham connected him to a supportive community of peers and adults at school and helped him access the resources he and his family needed.

Daniel returned to WPY to participate in the Roses in Concrete program, which pairs students of color from Waltham High School and Brandeis University for a yearlong mentoring experience.

After graduation, Daniel participated in WPY’s summer internship program and was placed with Wraparound Waltham: a full circle moment. Daniel starts community college in the fall.

Daniel said, “WPY has impacted my life in a great way. My mentor always told me that my voice can be heard. I felt loved, and there was a great community of people who were there to help me.”

Program Performance and Organizational Health

WPY has evaluation activities in place for all programming efforts. Below is a summary of some key measures that WPY tracks to demonstrate progress, create internal accountability, incorporate lessons learned, and adjust strategy.

	FY 2025	FY 2026 (P)	FY 2027 (P)
Program Performance			
Number of families served through Wraparound Waltham	270	280	300
Number of students participating in paid internships	120	150	180
Workshops presented to community partners about YRBS data	10	15	20
% of students in internship program who are students of color and/or come from low-income households	65%	70%	75%
Organizational Health/Capacity-Building			
Number of staff members	10	11	12
% staff who speak a language other than English	90%	>75%	>75%
% of internships paid for by employer partners	51%	60%	75%
% Board members who work, reside, or grew up in Waltham	90%	90%	90%

Social Impact

Waltham Partnership for Youth is creating pathways for economic mobility, well-being, and belonging, especially for immigrant youth and families, by expanding access to paid internships, wraparound supports, and mentorship. WPY’s initiatives connect students to essential resources and meaningful opportunities, while its research elevates youth voice to influence local programming and policy. By centering collaboration and equity, WPY is building a stronger, more connected Waltham where all young people can thrive.

Below is the summary of the social impact that WPY aspires to have in the next two years.

Indicator	Current Numbers	2027
Number of community partners	40	45
\$ provided to families for emergency situations	\$8,400	\$16,000
% students satisfied with their internship experience	90%	95%
% students who demonstrated increased confidence because of their internship	89%	95%
% of WPY participants who progressed academically	94%	98%
% WPY participants who had an increased sense of belonging	76%	90%