

Louis D. Brown Peace Institute



FOUNDED: 1994

CURRENT ORGANIZATION BUDGET: \$1.3 M

CONTACT: Chaplain Clementina M. Chéry,
Co-Founder, President, and CEO

PHONE: 617-825-1917

EMAIL: tina@ldbpeaceinstitute.org

WEB: www.ldbpeaceinstitute.org

Investment Opportunity

The Peace Institute seeks to raise an investment of \$400,000 over the next two years to launch its Training & Technical Assistance Center, which will increase the capacity of public health professionals and institutional stakeholders to implement coordinated, consistent, and compassionate homicide response protocols. The Training & Technical Assistance Center will generate revenue for the PI through its fee for service Curriculum Development & Publications, Consulting & Convening Services, Workshops & Seminars Facilitation, and Research & Evaluation Tools focused on the Peace Institute's survivor-centered, trauma-informed methodology.

Clementina M. Chéry co-founded the Peace Institute (PI) in 1994 after her son Louis was murdered in the crossfire of a shootout. Her family left the hospital empty-handed and empty-hearted because there were no homicide response protocols in place at that time.

In the 22 years since Louis was killed, there have been an additional 1,296 murders in Boston. Each one of those victims has left behind relatives, friends, co-workers, and classmates to cope with lasting trauma after a homicide.

There are tens of thousands of survivors of homicide victims grieving the murder of a loved one in Boston and across the Commonwealth.

The Peace Institute is a center of healing, teaching and learning for those families and communities impacted by murder, trauma, grief and loss. The Peace Institute serves families on both sides of murder: families of victims and families of people arrested for murder.

The Peace Institute's work is rooted in the conviction that peace is possible. Peace is not defined simply by the absence of violence, but by the presence of healing, reconciliation, and accountability.

Two-year Goals

- Establish a scalable, income-generating Training & Technical Assistance Center
- Sign and implement Memorandum of Understanding on Homicide Response Protocol between the Peace Institute, provider agencies, and the City of Boston
- Diversify funding for long-term sustainability

Ways to Invest

FINANCIAL

- \$50,000 – Salary for Training & Technical Assistance Center Coordinator
- \$25,000 – Development of resource guide and training for providers working with families of those arrested or incarcerated for murder
- \$6,000 – Provides all of the necessary services to one family from death notification to burial

IN-KIND

- Printing services
- Board members
- Advisory Board members
- Client/Donor database services
- Development assistance

Leadership & Governance

Clementina M. Chéry is the Co-Founder, President, and CEO of the Louis D. Brown Peace Institute. Clementina is a visionary survivor who brings people together to mobilize for peace. She is an ordained Chaplain and a Lady of the Order of St. Gregory the Great, the highest honor bestowed by Pope John Paul II on a lay Catholic. She is an internationally recognized expert in the field of homicide response.

The Peace Institute is governed by an active 10 member Board of Directors. The board is co-chaired by Jamie Bissonette Lewey, Director, Healing Justice Program, American Friends Service Committee and Judith Radtke, a social worker.

“

It's been a long journey. A special thank you to everyone at the Peace Institute for their support services, education, and guidance for re-entry efforts they offer for mothers with incarcerated sons.

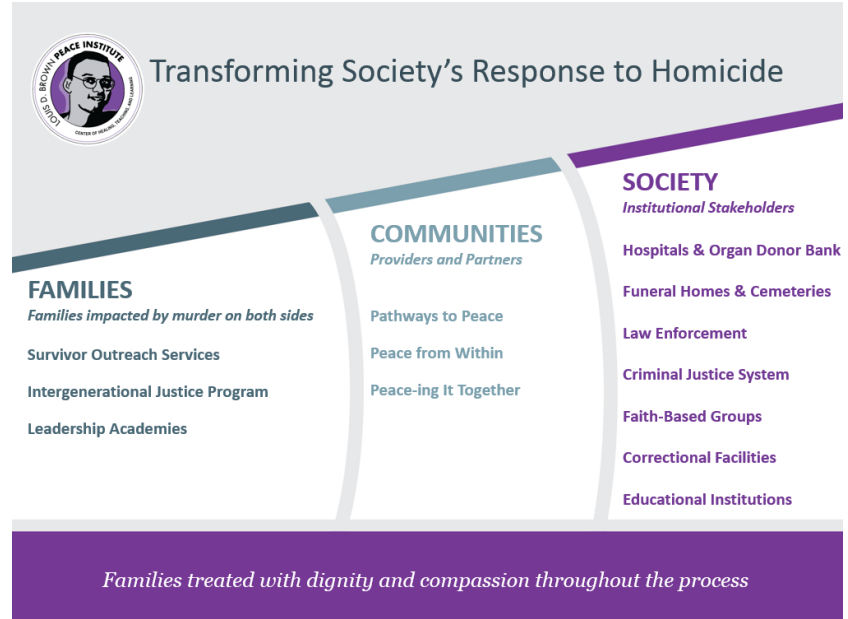
JANICE

Leadership Academy Participant

”



THE LOUIS D. BROWN PEACE INSTITUTE'S MODEL



MODEL FOR PEACE

The Peace Institute's approach is grounded in the Center for Disease Control's proven social-ecological framework that interventions are needed at multiple levels in order to interrupt cycles of violence. The Peace Institute's programming starts with families and radiates out to communities and society.

Families

Survivors Outreach Services offers families emotional and practical support 24-72 hours after a homicide using the Step-by-Step Burial and Resource Guide.

Intergenerational Justice Program provides support and guidance to families whose loved ones are accused, arrested, and incarcerated for homicide.

Leadership Academies equip families on both sides with healing practices to manage the long-term impacts of trauma and provide training to increase their capacity to inform, influence, and impact policy.

Communities

Pathways to Peace provides teachers with training to incorporate social-emotional learning curriculum that addresses grief and trauma in their classrooms.

Peace from Within delivers workshops for incarcerated men to prepare them to return home to their community peacefully.

Peace-ing It Together is a course that gives the Peace Institute's partners the opportunity to do their own healing and gain skills to address racism and violence in their communities.



Beth Israel Deaconess Medical Center’s partnership with the Peace Institute has allowed us to do concrete, meaningful work together to strengthen our communities and care for and support individuals and victims affected by violence.

KEVIN TABB, MD

**President and CEO,
Beth Israel Deaconess Medical Center**



Key Investors

- JOSEPHINE AND LOUISE CRANE FAMILY FOUNDATION
- EASTERN BANK CHARITABLE FOUNDATION
- GARDINER HOWLAND SHAW FOUNDATION
- MA OFFICE OF VICTIMS ASSISTANCE
- MARK WAHLBERG YOUTH FOUNDATION

Partners

- BETH ISRAEL DEACONESS MEDICAL CENTER
- BOSTON POLICE DEPARTMENT HOMICIDE UNIT
- BOSTON PUBLIC HEALTH COMMISSION
- MA DEPARTMENT OF PUBLIC HEALTH
- PLYMOUTH COUNTY CORRECTIONAL FACILITY
- SPAN, INC.
- SUFFOLK COUNTY DISTRICT ATTORNEY’S OFFICE
- UMASS BOSTON
- UMASS MEDICAL SCHOOL
- VISIONS, INC.

SOCIETAL IMPACT

The long-term impact of the Peace Institute is to transform society’s response to homicide so that all families are treated with dignity and compassion. The current response to homicide is so inadequate it is referred to “secondary victimization.”

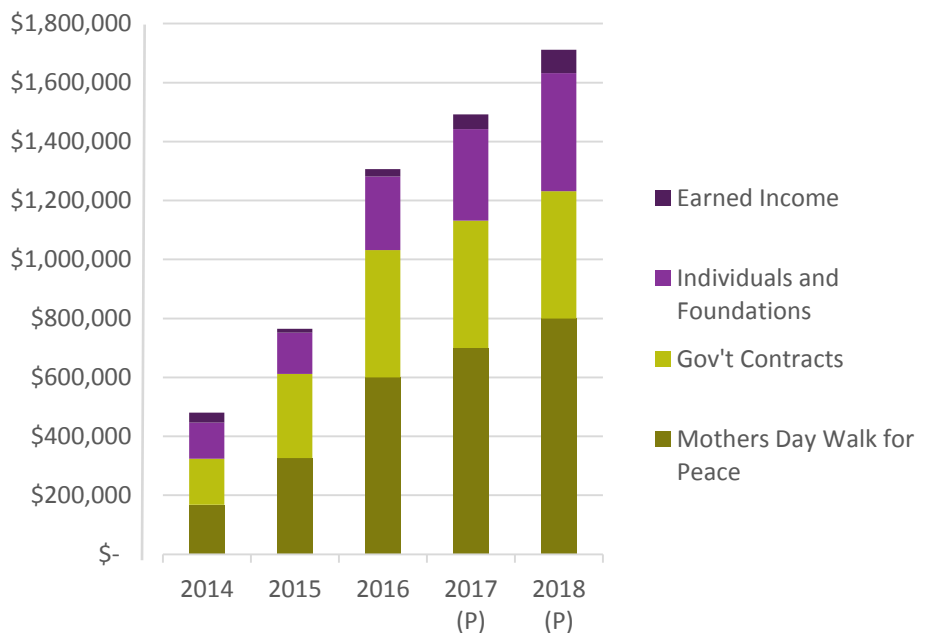
The Peace Institute builds the capacity of families to lead the peacemaking process in order to reduce retaliatory violence. The PI has created a process for families impacted by murder on both sides to use their lived experiences and expertise to positively impact public health, public safety, and criminal justice policies in Boston and beyond. These families have founded their own organizations such as Mothers for Justice and Equality and the Healing and Encouragement/Survivor of Homicide Ministry at Morning Star Baptist Church.

The PI has developed best practices in serving survivors in the field of homicide response. This expertise is sought after by public health officials across the state. The PI convenes these stakeholders through the Serving Survivors of Homicide Victims Providers Network to continually improve homicide response practices and infrastructure in the Commonwealth. The PI has trained hundreds of providers and is well poised to equip thousands more through the Training & Technical Assistance Center to institute more effective and equitable homicide response protocols.

FINANCIAL SUSTAINABILITY

The Peace Institute is focused on maximizing the net proceeds from its annual fundraiser, the Mother’s Day Walk for Peace. The organization has had a 300% growth in revenue from the walk from 2014 to 2016. In addition, the PI will launch its income-generating Training & Technical Assistance Center in 2017, increasing its fiscal self-reliance.

Revenue by Source



A Mother's Story

Deidre Murphy

Mother of Derek Matulina

Born: October 28, 1991

Died: May 7, 2011

If it hadn't been for the Peace Institute, I don't know how I would have gotten myself through the funeral of my 19-year-old son Derek, or the arraignment and the sentencing of his killer.

The love, comfort, referrals to grief therapists, and practical suggestions kept me moving forward.

With the help and encouragement of the Peace Institute, I contacted Derek's many friends and told them, in the powerful words that only an angry mother, crazed with grief could deliver, *"I do not want retaliation for Derek's death. The vicious circle of violence and death cannot continue. End it here."*

The driving force from the Peace Institute resonates with me to bring the message of peace to our churches, schools, the corridors of state government, and to all who hold on to hope, working toward a shared goal of peace.



PROGRAM PERFORMANCE AND ORGANIZATIONAL HEALTH

Below is a summary of the key measures the Peace Institute tracks to demonstrate progress, create internal accountability, capture lessons learned, and adjust strategy as necessary.

	FY 2016	FY 2017 (P)	FY 2018 (P)
PROGRAM PERFORMANCE			
Mothers Day Walk for Peace Participants	15,000	20,000	50,000
Participants in Leadership Academy	32	52	75
Number of agencies receiving training and technical assistance from the Peace Institute	56	75	150
Number of agencies using tools and publications from the Peace Institute	75	125	200
ORGANIZATIONAL HEALTH/CAPACITY-BUILDING			
Increase staff	9.5	11.5	14
Grow Board of Directors	10	11	12
Form Advisory Board	Design and Develop	Launch and Recruit	5 People in Place
Increase new corporate and individual donations	\$50,000	\$100,000	\$175,000
Total Revenue:	\$1,300,000	\$1,500,000	\$1,700,000

SOCIAL IMPACT

Through its communications, partnerships, and protocols, the Peace Institute works to change the experiences of families and communities impacted by murder. Below are four indicators that the Peace Institute will track to measure its progress.

INDICATOR	2016	2017	2018
Establish Training & Technical Assistance Center	Design and develop	Launch	Asses and refine
Memorandum of Understanding between the City of Boston and providers to formalize Homicide Response Protocol	Convene meetings with key stakeholders	Agreement signed	Assess and refine
Establish online communication vehicle for the Peer-to-Peer Survivor Network	Survey, design and develop	Launch	Evaluate and update
Amend the State of MA Victim Compensation Law	Convene stakeholders	Community engagement	File legislation